



第三屆ESG全球倡議論壇
3rd ESG Global Initiative Forum

KMC永續發展與行動

KMC Sustainability Strategy and Actions

桂盟國際股份有限公司
Kevin Chen 陳奕名 副總

目錄

Contents

1

KMC的永續旅程

KMC's Sustainability Journey

2

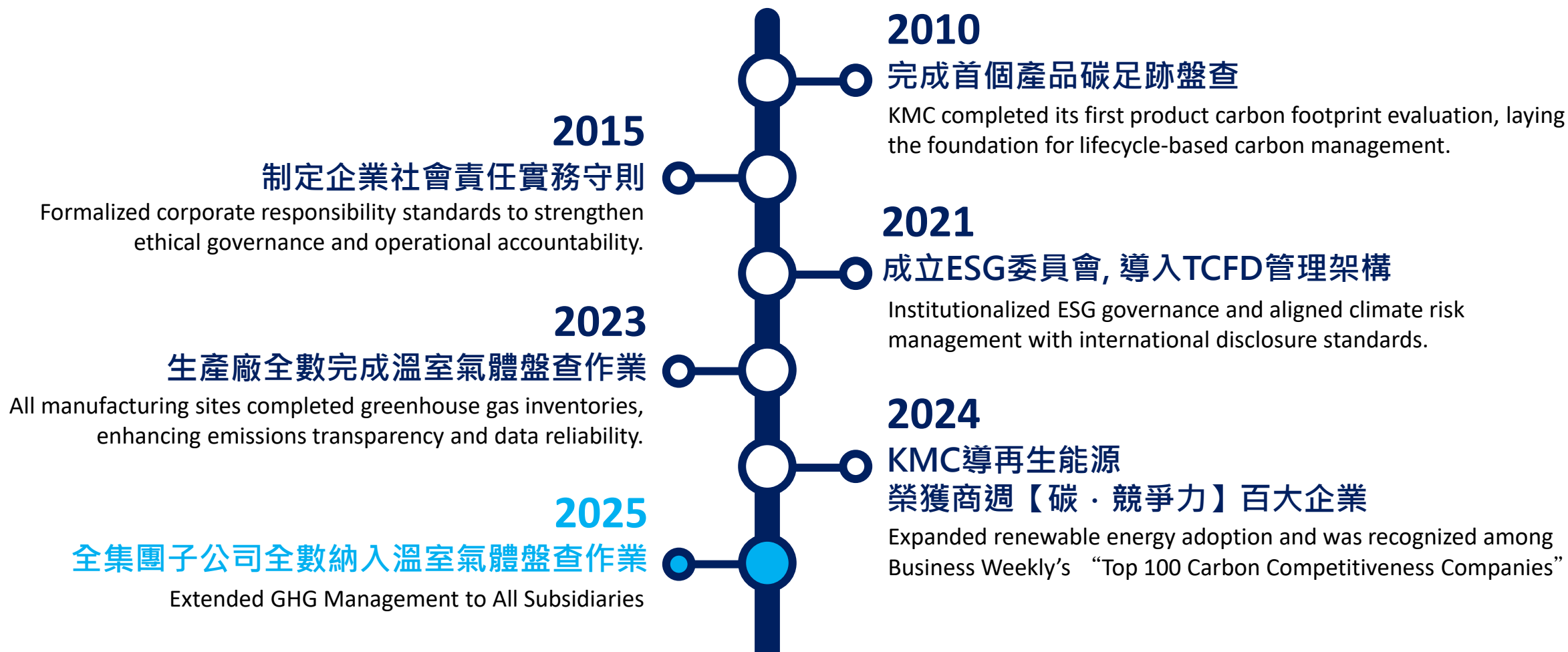
KMC永續發展實踐

Sustainability in Practice



KMC的永續旅程 深耕超過十年的承諾

Long Commitment to Responsible Growth



KMC永續策略藍圖

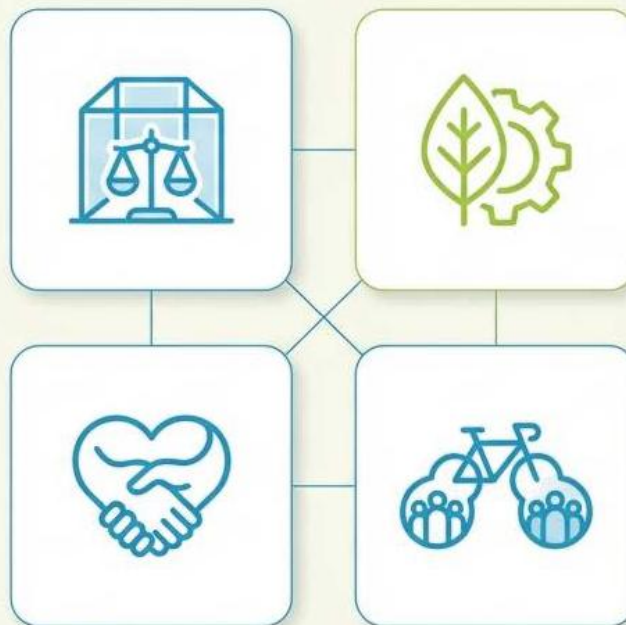
KMC's Sustainability Strategy Blueprint guides the Company in balancing Environmental, Social, and Governance priorities.



透明公司治理

強化治理架構、貫徹誠信經營、管理營運風險

Committed to strengthening corporate governance mechanisms and ensuring ethical, accountable management practices.



致力環境永續

溫室氣體管理、推動友善環境產品、應對氣候變遷

Actively addresses environmental impact through structured climate and resource management



打造友善職場

維護勞工人權、促進員工健康、培育人力資源

Sustainable growth depends on a safe, inclusive, and empowering work environment. strengthens organizational sustainability through long-term human capital investment.

共創美好社會

推廣自行車運動、培育在地國手、投入社會慈善

Extends its sustainability vision beyond operations to foster positive social impact, by integrating corporate resources with societal needs.





BICYCLING ALLIANCE
FOR SUSTAINABILITY

KMC永續發展實踐

Sustainability in Practice

E 致力環境永續

邁向「淨零製造+淨零出行」的雙淨願景

KMC is driving decarbonization across manufacturing and product value chains.

We advance durable, low-carbon products while accelerating operational emission reductions and energy transition.



減碳目標

訂定「每年減碳3%，2030年至少減碳25%」的清晰路徑。

KMC has established a clear decarbonization pathway:
3% annual carbon reduction, at least 25% reduction by 2030

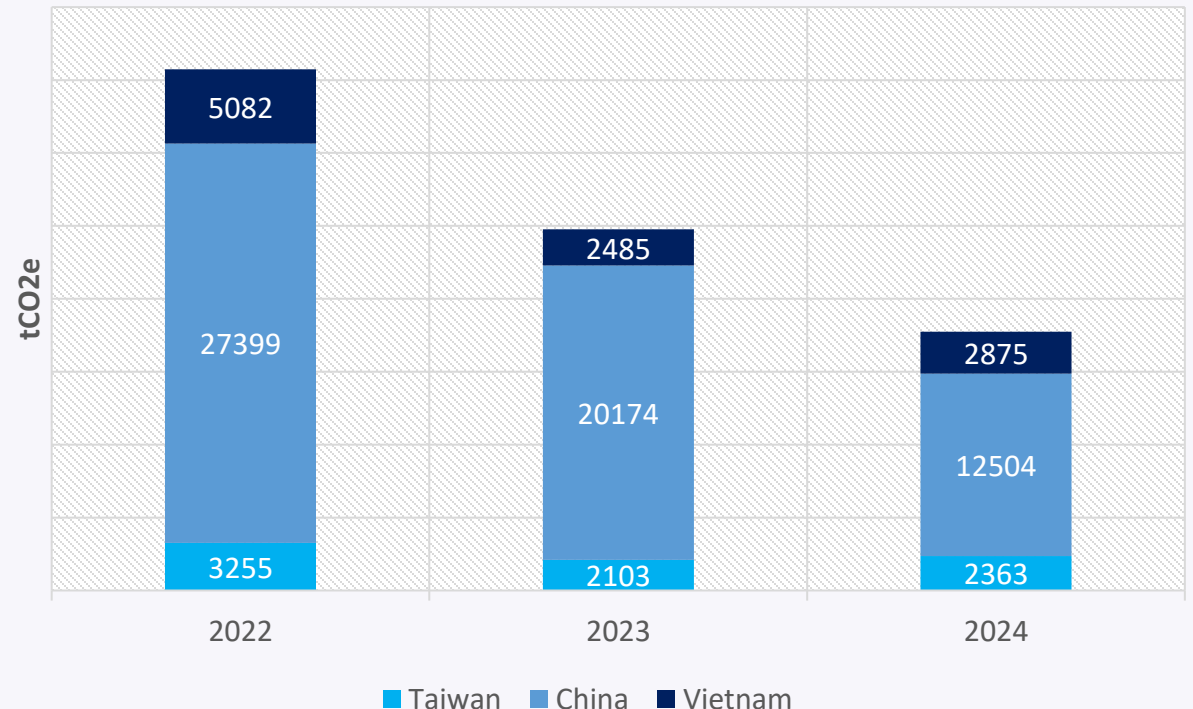


綠色能源

蘇州與天津桂盟廠區設置太陽能板，深圳桂盟自2024年起100%使用綠色能源

KMC Suzhou and Tianjin have installed rooftop solar systems. **KMC Shenzhen** has transitioned to **100% renewable electricity since 2024**, reinforcing our commitment to low-carbon manufacturing.

Greenhouse Gas Inventory for Scope 1 & 2



S 共創美好社會

以自行車文化 鏈動社會正向能量



知識與安全教育

We promote bicycle knowledge and traffic safety through schools and bike shops, strengthening public awareness and advancing sustainable mobility adoption.



再生單車捐贈

In partnership with nonprofits, we refurbish and donate bicycles to vulnerable individuals, extending product life cycles while contributing to social impact and circular economy goals. °



運動與人才發展支持

We support cycling athletes and teams to foster talent development and strengthen the long-term sustainability of the cycling ecosystem.



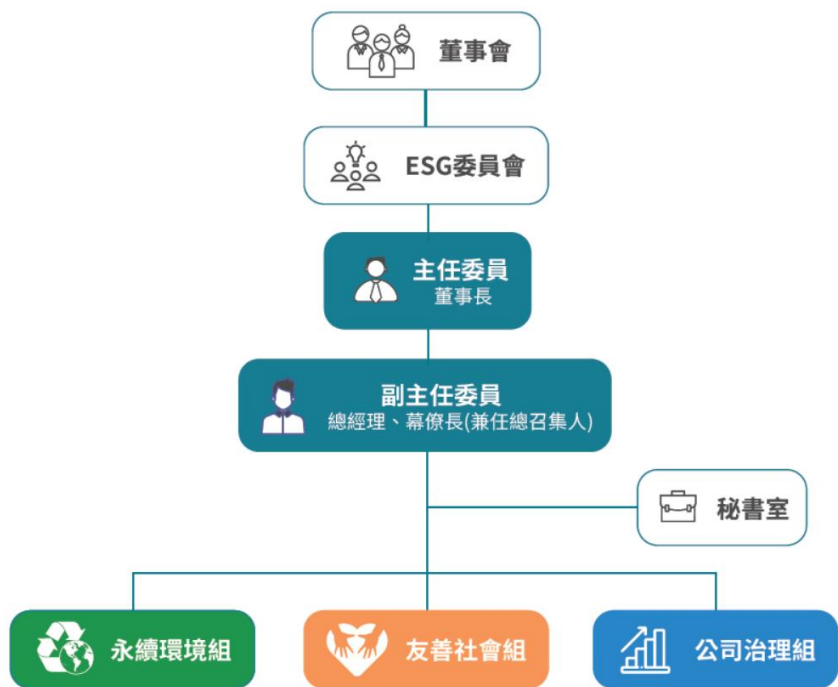
推動公益與社會關懷

We support vulnerable groups and local community development, delivering meaningful social value beyond our core operations.



G 透明公司治理

誠信為本 健全的永續治理架構



建立個資及智慧財產保護政策 建立永續管理制度及內部管理辦法

We have established strong data and IP protection policies alongside a formal sustainability management framework to enhance governance and risk oversight.



完善建置供應商行為準則

簽署供應商行為準則及社會責任承諾書，採購契約納入社會人權保障條款

Institutionalized supplier conduct standards, requiring signed compliance commitments and embedding human rights clauses in procurement contracts.



永續連結貸款

通過第三方可持續發展連結貸款準則查驗 (SLLPs)，桂盟永續績效已獲金融機構認可

Successfully verified under the Sustainability-Linked Loan Principles (SLLPs), reflecting external recognition of our ESG performance.



LINK TO PERFECTION

「鏈」出不一樣的未來 桂盟國際廢材設計競賽

一起來發揮創意
讓被遺忘的腳踏車廢材零件
因為你的創意重獲新生



從自行車廢材出發的永續實踐

E 材料循環的實際行動

- 重新定義廢材價值，延長材料生命週期
- 延伸製造端如何落實循環經濟思維
- 探索對低碳與資源效率的可行方案

Circular Materials in Action

Redefining the value of industrial by-products by extending material lifecycles and exploring practical pathways for low-carbon and resource-efficient manufacturing.

S 培育產業未來所需的人才

- 以「指定材料 × 實體製作」連結真實產業情境
- 讓新世代理解製造限制、環境責任與設計價值
- 以教育與創作，建立長期的人才與價值投資

Cultivating Future Talent for the Industry

Connecting education with real manufacturing contexts to help the next generation understand design value, production constraints, and environmental responsibility.

G 開放合作的永續治理模式

- 串聯產業、教育、設計與社會創意
- 建立透明、可參與、可複製的 ESG 行動模式

Collaborative Sustainable development Model

Linking industry, academia, design, and society to build a transparent, participatory, and scalable ESG collaboration model.

KMC創意競賽 | 成果亮點

參賽作品

100+ 件創意提案 Creative proposal

作品創意類型

48%

功能性設計作品

- 具操作日常使用性，可小量實驗製作
- 廢材被視為「結構材料」

Works focused on visual expression, highlighting the distinctive aesthetics of recycled materials.

32%

裝飾 / 藝術類作品

- 偏氛圍與視覺，重視材料肌理美感
- 強烈「廢材視覺辨識度」

Practical, small-scale designs where recycled materials are used as structural elements.

「鏈」出不一樣的未來

20 組

Competing Teams



創意轉化為實體作品角逐最終王冠
From creative ideas to physical works competing for the final crown.

產業意義

學生能掌握零組件特性進行創意轉化，產業培育具實作能力的循環設計人才，建立綠色供應鏈創新基礎。

By enabling students to transform bicycle components through creative design, the initiative helps cultivate hands-on circular design talent and lays the foundation for innovation within a greener supply chain.



創意競賽是KMC ESG體現平台
也是BAS循環經濟的實踐場域。

“Development that meets the needs of the present without
compromising the ability of future generations to meet their own needs.”
— United Nations

讓創意成為永續的起點



BICYCLING ALLIANCE FOR SUSTAINABILITY



Thank You